



## Fishers Lane, London, W4 1YA

RETIREMENT FLAT OVER 60'S ONLY - Recently renovated first floor purpose built retirement flat ideally situated in this central Chiswick location close to all amenities. Double bedroom, luxury bathroom, open plan kitchen living room, fully integrated kitchen, extensive built in storage, communal lounge, communal landscaped gardens. Situated just north of Chiswick High Road offering close proximity to Turnham Green Tube Station and it's vast shopping facilities. EPC-C. Hounslow Council Band D. Available 11th May 2026, unfurnished.

- Newly renovated
- Excellent location
- OVER 60'S ONLY
- Woodflooring throughout
- Double Bedroom
- Open plan kitchen lounge
- Communal Gardens
- Communal Lounge
- Unfurnished
- Available 11th May

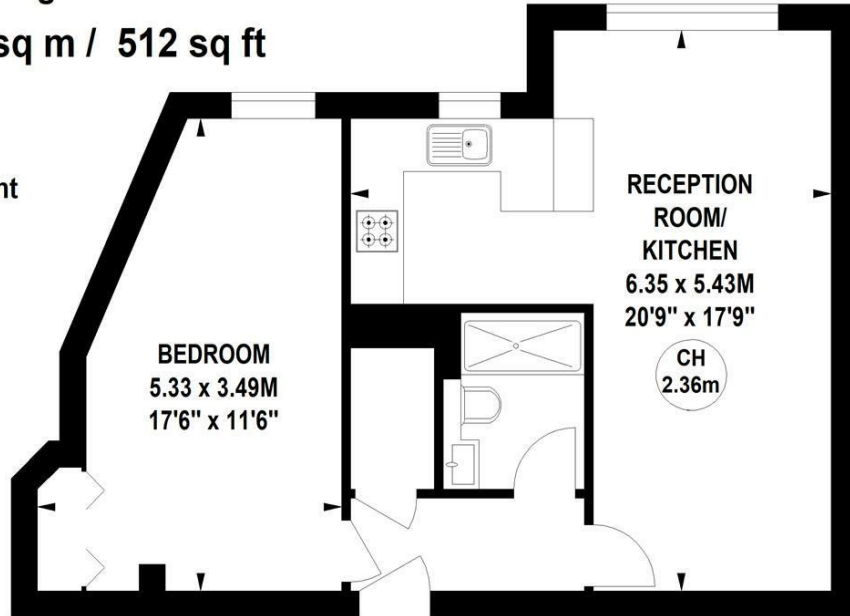
**£1,750 Per Calendar Month**

# Homecross House, W4

Approximate gross internal area

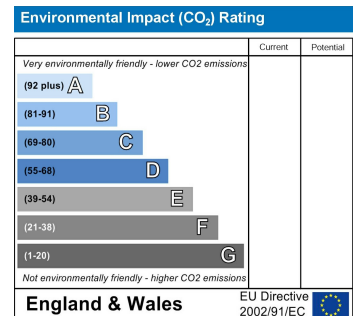
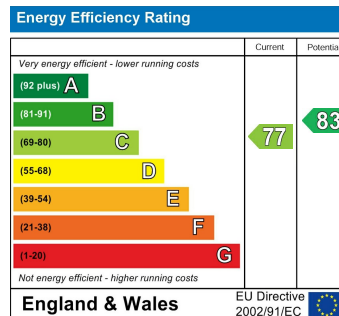
47.56 sq m / 512 sq ft

Key :  
CH - Ceiling Height



## First Floor

Not to scale, for guidance only and must not be relied upon as a statement of fact.  
All measurements and areas are approximate only



5-7 Turnham Green Terrace, Chiswick, London, W4 1RG

Tel 020 8747 8800

E-mail [lettings@whitmanandco.com](mailto:lettings@whitmanandco.com)

Website [www.whitmanandco.com](http://www.whitmanandco.com)



MISREPRESENTATION ACT 1967

Whitman & Co. for themselves and for the vendors give notice that these particulars do not constitute any part of, an offer of contract. All statements contained in these particulars are made without responsibility on the part of Whitman & Co. or the vendor. None of the statements contained in these particulars is to be relied upon as statements or representations of facts. Any intending purchaser must satisfy himself by inspection or otherwise as to the correctness of each of the statements contained in these particulars. The vendor does not make or give, and neither Whitman & Co. or any person in their employment has any authority to make or give, any representation or warranty whatever in relation to the property.